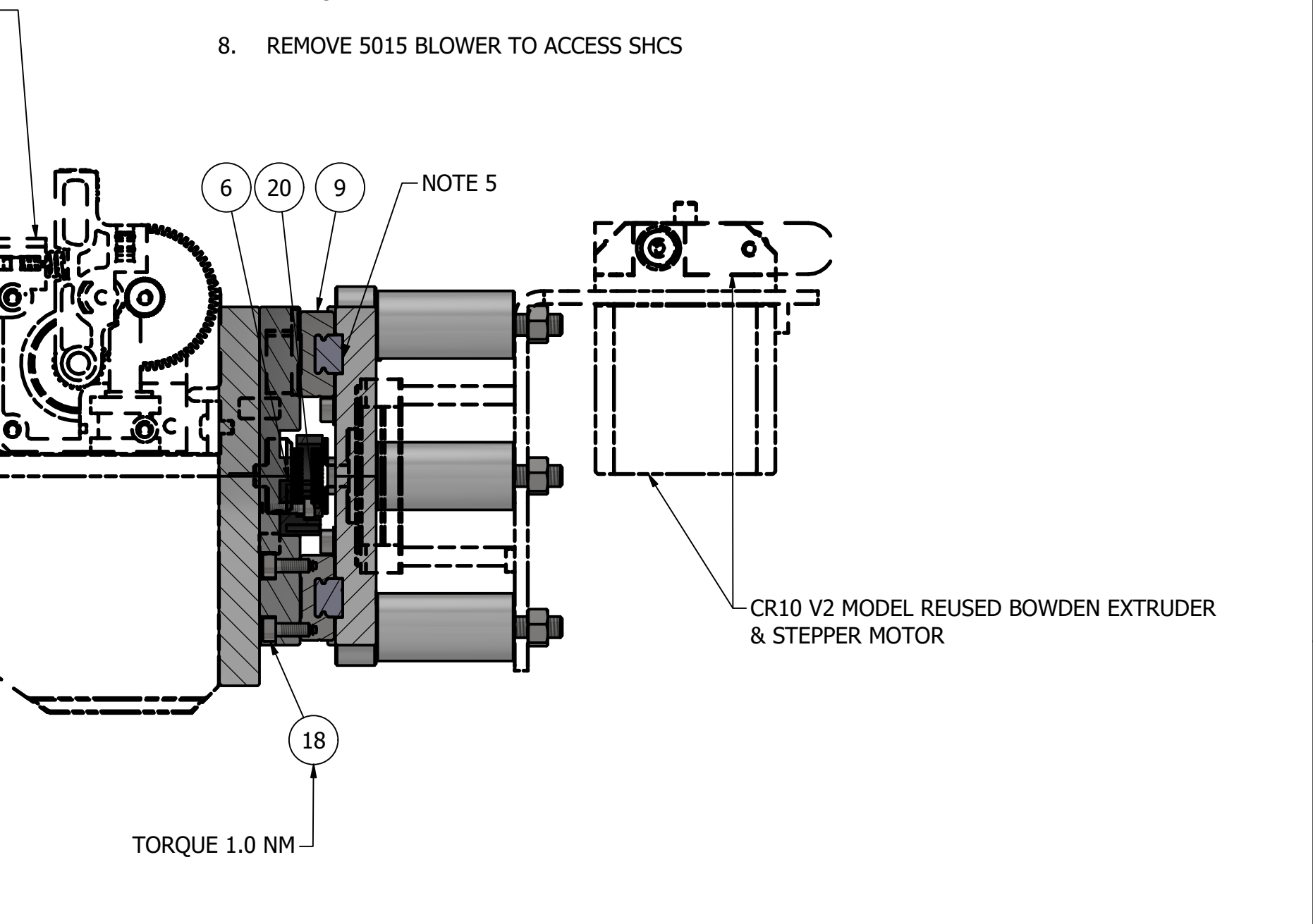
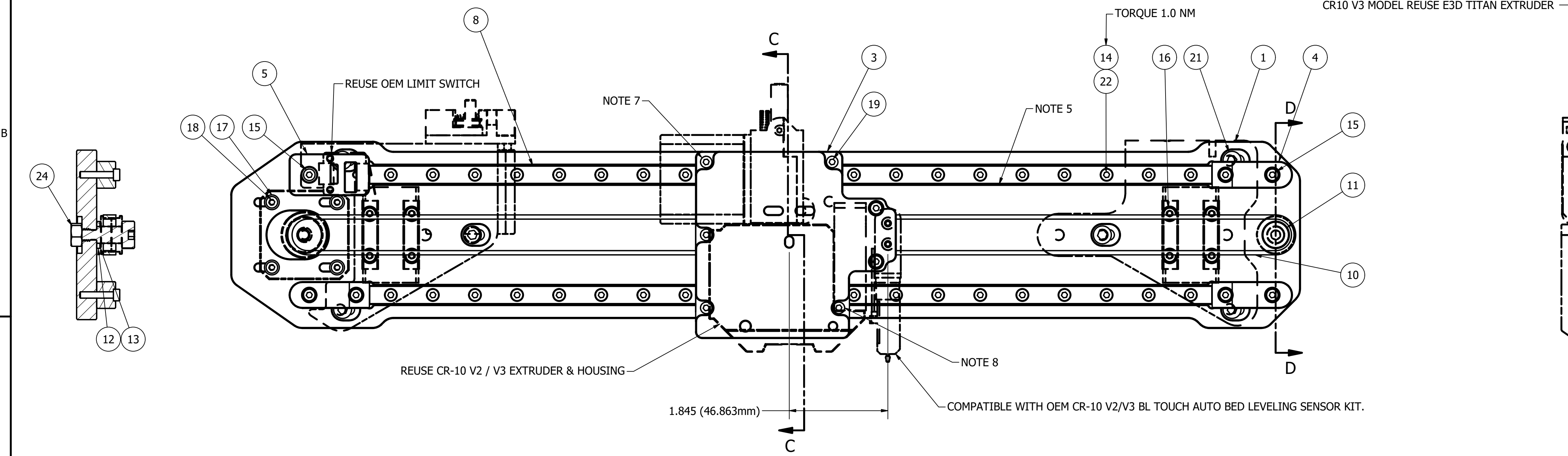


PARTS LIST			
ITEM	QTY	PART NUMBER	DESCRIPTION
1	1	10-0001	MDG X-AXIS DUAL LINEAR RAIL PLATE, 400MM
2	1	10-0002	MDG TOOL BASE, CR-10 V2 / V3
3	1	10-0003	MDG-EXTRUDER MOUNT, CR10-V2 / V3
4	3	10-0006	MDG-X AXIS END STOP
5	1	10-0007	MDG-X AXIS LIMIT SWITCH PLATE
6	1	10-0008	MDG X-AXIS TIMING BELT CLAMP
7	6	10-0009	MDG Z AXIS SPACER
8	2	MDG-LR09-1H-400	LINEAR RAIL, 9MM X 400MM, SS
9	2	MDG-LRC-09H	LINEAR RAIL CARRIAGE, 9MM RAIL, H STYLE
10	1	MDG-GT2B-2P-6W-1M	GT2 BELT
11	1	SB-A201	SHOULDER BOLT
12	1	SBS-A282	SHIM
13	1	SBS-A263	SHIM
14	40	M119A2A162	SHCS
15	7	M119A2A164	SHCS
16	8	M119A2A160	SHCS
17	4	M12A5C3	PLAIN WASHER
18	12	M119A2A161	SHCS
19	7	M119A2A163	SHCS
20	2	M119A2A154	SHCS
21	6	M119A2A188	SHCS
22	40	HLN-M3X0.5	HEX LOCK NUT
23	6	HLN-M5X0.8	HEX LOCK NUT
24	1	HLN-M6X1	HEX LOCK NUT

- NOTES:
- DASHED LINES INDICATE REFERENCE COMPONENTS AND ASSEMBLIES WHICH ARE NOT INCLUDED IN BOM. THIS INCLUDES ITEMS REUSED FROM THE OEM PRINTER ASSEMBLY AND / OR TO BE PURCHASED SEPERATLY.
 - FOR STEP-BY-STEP INSTALLATION INSTRUCTIONS PLEASE REFERENCE DOC NO. MDG CR-10 - DOC, LATEST REVISION.
 - PLEASE VISIT MDG CR-10 PROJECT BUILD PAGE FOR ADDITIONAL PROJECT / BUILD INFORMATION
 - 380MM SPACING FOR Z-AXIS RAILS FOR MOUNTING TO ANY 3D PRINTER USING 2040 ALUMINUM EXTRUSION WITH OUTSIDE EDGE TO OUTSIDE EDGE SPACING OF 400MM.
 - LINEAR RAILS MOUNTED IN PRECISION MACHINED POCKETS. LOWER EDGE IS REFERENCE EDGE. CONFIRM LINEAR RAILS ARE PARALLEL USING A DIAL INDICATOR.
 - MDG Z-SPACERS (P/N: 10-0009) FOR USE WHEN Z-AXIS LINEAR RAILS ARE USED. OEM ROLLER WHEELS CAN BE USED WHEN Z-AXIS LINEAR RAILS ARE NOT INSTALLED.
 - OMIT THIS SHCS WHEN USING E3D TITAN EXTRUDER. RETAIN SHCS FOR BOWDEN STYLE EXTRUDER.
 - REMOVE 5015 BLOWER TO ACCESS SHCS



NO.	DESCRIPTION	BY	CHK	APP	DATE
REVISIONS					

THIS DRAWING IS THE PROPERTY OF MAKERS DEVELOPMENT GROUP, LLC.
 THIS DRAWING AND DATA EMBODY PROPRIETARY INFORMATION WHICH IS THE CONFIDENTIAL PROPERTY OF MAKERS DEVELOPMENT GROUP, LLC AND SHALL NOT BE COPIED, REPRODUCED, DISCLOSED TO OTHERS, OR OTHERWISE USED IN WHOLE OR IN PART IN ANY MANNER PREJUDICIAL TO THE INTERESTS OF MAKERS DEVELOPMENT GROUP, LLC WITHOUT EXPRESS WRITTEN CONSENT OF MAKERS DEVELOPMENT GROUP, LLC. MAKERS DEVELOPMENT GROUP, LLC EXPRESSLY RESERVES ALL DESIGN, MANUFACTURING USE, REPRODUCTION AND SALES RIGHTS IN AND TO ALL INFORMATION CONTAINED IN OR DISCLOSED BY THIS DOCUMENT. THIS DRAWING IS LOANED IN CONFIDENCE WITH THE UNDERSTANDING IT SHALL BE RETURNED ON DEMAND. ACCEPTANCE OF THIS DRAWING SHALL BE CONSTRUED AN AGREEMENT TO OBSERVE THE FOREGOING CONDITIONS AND AS AN ADMISSION THAT MAKERS DEVELOPMENT GROUP, LLC IS THE EXCLUSIVE OWNER OF THIS DRAWING. "MAKERS DEVELOPMENT GROUP EXPRESSLY RESERVES ALL DESIGN, MANUFACTURING USE, REPRODUCTION, SALES RIGHTS IN AND TO ALL INFORMATION CONTAINED IN OR DISCLOSED BY THIS DOCUMENT."

THIS DRAWING CONFORMS TO A.S.M.E. STANDARD Y14.5 - 2018. UNLESS OTHERWISE SPECIFIED: ALL CIRCLES, LINES & FACES TO BE CONCENTRIC, PARALLEL & PERPENDICULAR WITHIN 0.010". UNSPECIFIED CHAMFERS AND RADII TO BE 0.03". UNSPECIFIED MACHINE FINISH 125 RMS. REMOVE ALL SHARP EDGES. COUNTERSINK TAPPED HOLES TO MAJOR THREAD DIAMETER. DO NOT SCALE DRAWING.

PROJECTION

UNSPECIFIED TOLERANCES		
DIMENSION	X	XX
UNDER 36"	+/- .050	+/- .010
OVER 36"	+/- .100	+/- .025
ANGLES		+/- .0° 30'

MATERIAL:	SURFACE PREP.:
HARDNESS:	COAT / TREATMENT:
REFERENCE:	COLOR:
PATTERN:	
PREPARED BY / DATE:	CHECKED BY / DATE: MDG 10/31/2020
REVIEWED BY / DATE:	APPROVED BY / DATE: MDG 10/31/2020
PART NUMBER:	10-0030

MAKERS DEVELOPMENT GROUP™

TITLE: MDG X-AXIS DUAL LINEAR RAIL KIT, CR-10 V2 / V3

DRAWING NUMBER: 10-0030

SIZE	SCALE	REV
D		0